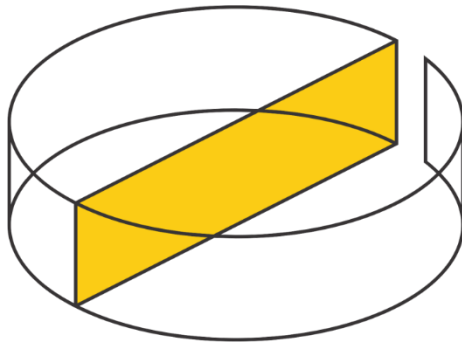


STATEMENT OF QUALIFICATIONS



embee *companies*TM

Rovazzini Electrical Sherpas INC

Danny Chang and Associates

embee Technologies

embee Power

embee 3D

SABP

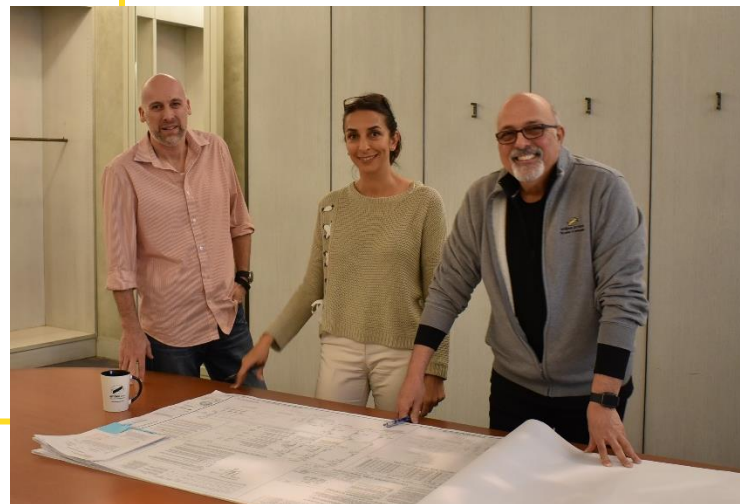
SSP

Company Statement

embee Companies is a multidisciplinary construction support enterprise consisting of five separate and distinct service offerings. We pride ourselves in our sole source and design build concept.

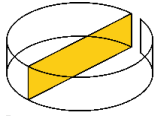
- **embee Technologies** is our low voltage division, offering complete data center, network infrastructure, Wi-Fi, DAS, Point to Point Radio and I.T. services.
- **embee Power** service offering is dedicated to all aspects of electrical contracting services.
- **embee 3D** is our 3D scanning discipline offering virtual reality, AR, and 3D scanning services for the construction industry
- **SABP** (Santa Ana Blueprint) is our graphics and large format division which is where all projects begin.
- **SSP** offers a complete compliment of security solutions including thermal imaging cameras, security cameras, door access, and alarm monitoring.

We firmly believe our value proposition is unequaled in the industry. As a “one stop” shop, clients can be confident that since 1946, embee Companies have been serving the Southern California community, bringing immediate, quantifiable value to every endeavor we have had the privilege to participate in.



Our mission is to create immediate, quantifiable value for our clients. Our vision is to streamline the building process by providing many required trades and services under one roof: fewer mistakes, less meetings, and lower costs. Guided by relentless focus on our core values: **Respect, Integrity, Accountability, Teamwork, and Innovation (RIATI)** we consistently deliver excellent project results.

“There are no short
cuts to success!”



embee *technologies™*

LEGOLAND, Carlsbad

embee has been dedicated over the past several years in installing and supporting LEGOLAND's Wi-Fi infrastructure. Projects have included both inside and outside applications in large parking lots. Wi-Fi evaluation and design surveys have been conducted to optimize wireless coverage. Heat mapping to validate results is part of the deliverable.

Accurate, Irvine

Accurate is a national background provider. For their Irvine facility, we assisted with the computer networking installation and conference room monitoring systems. Large screen presentation monitors were mounted, cabled, and installed throughout the facility.

LPA Design Studio, Irvine

embee Companies has been engaged in several projects for LPA Design Studios. We participated with the construction team for the office relocations in San Diego and Irvine. Project scopes included low voltage computer networking, MDF installation, Wi-Fi implementation and electrical power. Additionally, we delivered their new offices in San Jose, Dallas, and Sacramento. These scopes varied widely, but at the core, the trades we provided were C-7 low voltage and C-10 electrical power



The Superior Court of California, County of Orange

embee has been providing network cabling services for the County of Orange in the Santa Ana Court facilities for nine years. We install network cabling for all computer networking requirements, including the VOIP phone system. MDF and IDF refresh work, cable path design and support, as well as data center and ladder racks.



Irvine Civic Center, Irvine

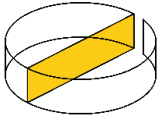
We have engaged in numerous projects that have been performed for the city of Irvine over the past ten years. Fiber installation for the Great Park, cabling and security monitoring for the police department, network cabling for all city offices and Wi-Fi connectivity for all city parks has been our scope



Orange County Central Jail, Santa Ana

embee has been providing network cabling services for Orange County Central Jail at their Santa Ana location for five years. We have installed network cabling for all computer networking requirements, including their VOIP phone system. MDF and IDF refresh work, cable path design and support, as well as data center and ladder racks. The work in this facility is very arduous due to the high security nature of the environment.





embee technologies™

Pasadena City College, Pasadena

embee has provided Pasadena City College with numerous low voltage and fiber installation engagements for classroom connectivity for a campus wide network and internet.



Irvine Valley College, Irvine

This project included installation of a campus wide Blue Phone for emergency use and radio heads transmitting signals to parking lot locations for TALK A PHONE application. Part of our scope was setting concrete pads, conduit runs, trenching and system commissioning in accordance with our standards.



Santa Ana College, Santa Ana

Our works with Santa Ana College included low voltage projects and MAC work. Installations of computer network cabling, as well as presentation monitors and classroom connectivity were performed.





Orange Coast College, Costa Mesa

The project with Orange Coast College included fiber extensions that covered several long fibers runs through parking lots to support the new sports facility. The primary material used was corning fiber. Trenching, fiber splicing, and terminations were all provided by our team.

Golden West College, Huntington Beach

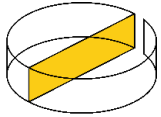
Golden West College located in Huntington Beach, California used our services on numerous low voltage and fiber installation engagements for classroom connectivity and for campus wide network and internet.



California State University, Los Angeles

The scope of work with California State University, Los Angeles was a Wi-Fi refresh and augmentation. A total of 58 access points were installed on campus in the outdoor environment. A mesh topology was designed to ensure adequate coverage in an area where large distances precluded building supports. The project was designed and commissioned by embee Technologies.





embee technologies™

Santa Rosa Memorial Hospital, Los Alamitos

- The OSHPD Wi-Fi refresh project encompassed 201 Access Points with Oberon enclosures. Seven were outdoor environments for rapid connection to emergency services. Several structural engineering issues were resolved using engineered coring between floors to accommodate access issues.
- Project included new structured cable, ceiling penetrations and a challenging array of cable suspension environments, as well as Wi-Fi predictive survey and existing conditions heat map.



- Positive customer review described our efforts as “relentless” under extreme adverse conditions.

Long Beach Memorial Hospital, Long Beach

- embee has been providing full technology services since 2014.
- We supplied Wi-Fi, network cabling, MAC work, design work and telecom equipment.
- Overcoming obstacles: this was an outdated facility with many structural challenges.



Petaluma Valley Hospital, Petaluma

We responded to emergency repairs needed on the Wi-Fi system at Petaluma Valley Hospital after a devastating wildfire. We immediately dispatched resources to the location and spent several days triaging the wireless communication system at the location.

Overcoming obstacles: the area had no wireless connectivity after the wildfire due to several cell towers being damaged during it.



Hoag Hospital, Newport Beach

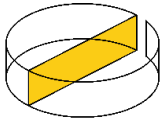
embee provided a comprehensive Wi-Fi refresh service and designed their 134 Cisco AP Wi-Fi system, provided heat mapping and validation survey for this project. All CAT-5E cable, ceiling penetration, IDF & MDF cable terminations and AP enclosures were installed.



Hoag Hospital, Irvine

We provided CT and MRI pre-installation e provided CT and MRI pre-installation electrical design validation and installation services.

Using Autodesk – Revit software, we confirmed the spatial design attributes. We identified all potential design anomalies using clash detection.



embee technologies™

Mission Hospital, Mission Viejo

Working under the supervision and direction of the state agency, OSHPD, we performed several Wi-Fi design and refresh projects at Mission Hospital and the MOB. Signal Strength was dramatically improved, and we constantly monitored the spectrum signal for losses.



St. Jude Medical Center, Fullerton

embee Companies was sub-contracted under McCarthy Construction to implement all Wi-Fi requirements for the new four-story wing. We installed: 187 APs with Oberon enclosures, cable suspension, J-hooks, ceiling penetrations, fire caulking, penetration sleeves, IDF & MDF terminations, rack, and cable trays. Five-month OSHPD project was a huge success resulting in a 98.4% spectrum coverage with validation survey and heat map.

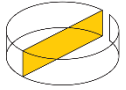
St. Joseph's Hospital, Orange

For twelve years, we have performed numerous network cabling, network infrastructure design and Wi-fi projects. Recently, we performed a campus-wide Wi-Fi refresh, as well as one in the convent.



PROJECT DELIVERABLES





embee power

Providence Saint John's Health Center

The scope of work in this project was demolishing all existing power, light fixture and lighting control indicated with (ER) to point of connection in order to supply new electrical and low voltage systems. Embee Power furnished and installed all labor, materials, and equipment for the renovation of John Wayne Cancer Center at St. Joseph Hospital.



ProGroup

embee Power established the complete electrical and low voltage work for a micro-office development. The principal is start-up locations for new business launch. We designed the electrical and low voltage plan and installed the data center, IDF, MDF, Fiber infrastructure, network cabling and Wi-Fi system



Firmenich

embee Power was subcontracted by Gray West Construction to provide power to new safety lights and exterior lights, as well as automatic doors. Along with the main scope of work, which was low voltage, we have relocated existing battery cabinet from Building #3 to Canopy #4 and we have wall mounted exhaust fans with timer switches.



Cost Plus World Market

embee Power was part of the team that constructed a tenant improvement project for Cost Plus World Market in Torrance. We installed the low voltage system consisting of fire alarms, transformer, exist signs, lights, and power outlets. Our team is specialized in installing seismic restraints for electrical equipment and this building had high ceilings which required knowledge and expertise to comply with California law requirements, as well as satisfying the client's aesthetic demand



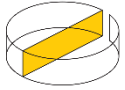
Westside Family Health Center

The scope of work in this project was to construct a complete and fully electrical system. We provided a safe off for demolition, followed by temporary lighting and power as needed. Moreover, we installed a generator in the underground parking structure and provided new power, lighting, and electrical panels for this five-floor building.

Extra Space Storage

The project was a ground up construction for a new location with two stories in Stanton, California. embee Companies was sub-contracted by Parkway Construction to furnish and install a complete electrical system, including meter base, switchgear, lighting, transformer, access doors and panels. Moreover, we installed the complete fire alarm system in accordance with the plans, specifications, and applicable codes.





embee power

South Orange County Community College District

The project was described as electrical work for new workstations at Alameda Offices. embee installed new conduits, receptacles, and data ports. We used a total of six circuits for each two cubicles, for a final installation of 36 new receptacles in 12 cubicles



Irvine Valley College

The scope of work for this project was the installation of three TALK A PHONE towers. We ran the seal tight from the existing PVC stub up to the existing handy box, installed a duplex receptacle and made up the connections.



Saddleback College

embee Power installed the electrical conduit and wire to provide circuits from new breakers in the existing Business Science and General Studies building for Saddleback College in Mission Viejo. We provided complete and fully functional duplex receptacles to be located at each desk. These receptacles were run in the raceway and mounted in bell boxes with covers.



South Coast Air Quality Management District

The scope of work was electrical infrastructure improvements for installation of EV charges. A total of 30 charges level 2 were installed in the parking lot for South Coast Air Quality Management District in Diamond Bar, California. Level 2 charging stations plug into a 240 outlet and deliver more power to the car to charge it faster.

Mercury Insurance

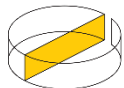
embee installed 23 electric charging stations for Mercury Insurance. These charging stations were installed in conjunction with Southern California Edison under an energy incentive program. All E.V. charging stations were level 2, able to fully charge an electric vehicle during an employee's 8-hour shift.



Lincoln Experience Center

embee Power installed 12 EV charging stations for Lincoln Corporation at Fashion Island in Newport Beach, California. The project was completed in the parking structure for the dealership showroom for the new line of electric vehicles. The charging stations ranged from level 2 to fast charge. The fast-charging unit can fully charge a Lincoln Aviator in 2 hours and 30 mins.





embee *power*

UCLA Faculty Club

embee Power was part of the team that completed an entire remodel of the UCLA Club Center. Our electricians provided electrical connection to all different receptacles, fire alarm system, installed new light fixtures, upgraded LED lights and exterior lighting. We added new circuit breakers where necessary and created new panels directory, along with providing electrical connection to all mechanical units.



Fountain Valley Regional Hospital SPD

The scope of work for this project was a tenant improvement of the SPD room. Our electricians had to pull approx. 300' large wire through 4" conduit which was mostly on the roof. The challenge was to get the wire on the roof. We had our distributors load all the wire on a rack and utilized a boom lift to raise wire to the roof and facilitate pulling wire through pull box on the roof.

Providence Little Company of Mary Medical Center

embee Power provided lighting and power requirements for a Cath Lab remodel at Little Company of Mary in Torrance California. Many challenges along the way that our professional electricians successfully overcame since this is a functioning hospital and care must be taken not to turn power off to critical areas while completing the work on schedule.



Firmenich Lab

Following the successful project of Firmenich Canopy, embee Power was contracted to be part of the team that conducted an industrial remodel of the food grade laboratory which develops flavors for major food establishments. We installed new electrical panels, along with light fixtures and light controls.





Hoag Hospital

embee 3D created the digital copy of the real-world Hoag Hospital in Irvine for the following areas: roof, basement, first and second floor.

One of the important values this project holds is for future tenant improvements. 3D scanning model is within one percent of reality and provides extremely accurate measurements of the room perimeter, along with any existing objects.

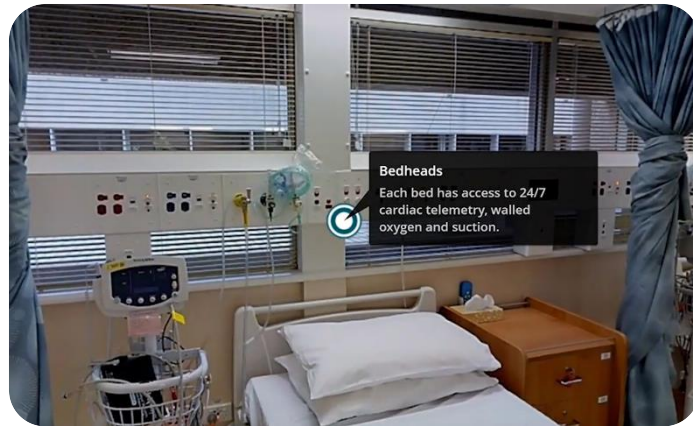


Our team of expert photographers scanned inside of the roof that was 15 feet high. We were extremely careful to cover all areas in order to protect them from any unwanted dirt particles when taking the ceiling tile off.

We scanned the perimeter of the kitchen; doctors' lounge and we were granted access in the pharmacy which is an extremely tied controlled area.

The 3D data we provide can also be exported as a point cloud which can be imported into any CAD program and used with the visuals from the 3D showcase to create the Building Information Model (BIM). With information like that, 2D floor plans are a breeze.

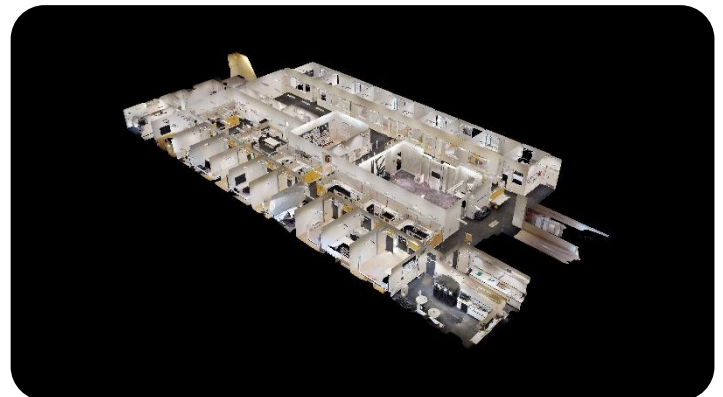
A 3D scan can give a lot of information about the design of an object, in a process called reverse engineering.



Our 3D Virtual Environment also allows annotation tags to be allocated to anything in the built environment. For example: equipment with serial number, date purchased, and warranty information. These tags can be linked to video or other website references.

How does it work?

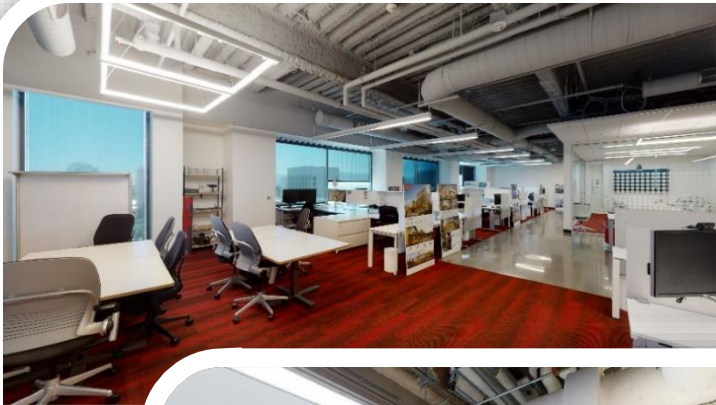
3D scanning is a technology for creating high-precision 3D models of real-world objects or environment. A 3D scanner takes multiple snapshots of the surrounding areas. The shots are then fused into a 3D model, an exact three-dimensional copy of the environment, which you can rotate and view from different angles on your computer.





LPA Design Studios

embee 3D scanned the 1st floor and 12th floor of the LPA location in San Jose, California. The purpose behind the scan was to memorialize the interior space and be able to measure within the virtual environment in anticipation of remodeling.



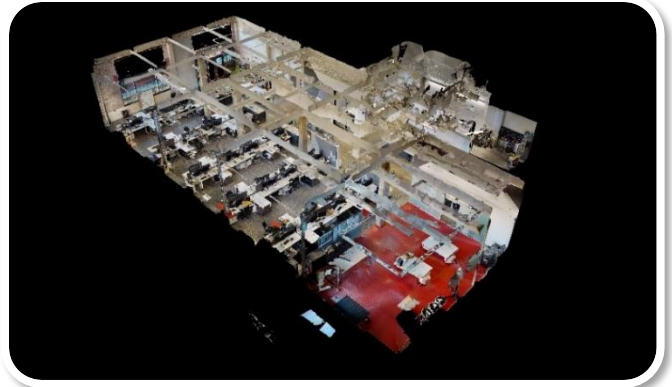
Todd Pipe

Our team of expert photographers scanned the entire Todd Pipe facility located in Buellton, California to optimize camera view and placement. As a “one stop” shop, SSP our security system division provided labor and material for the installation of 8 security cameras.

UCI Medical Center

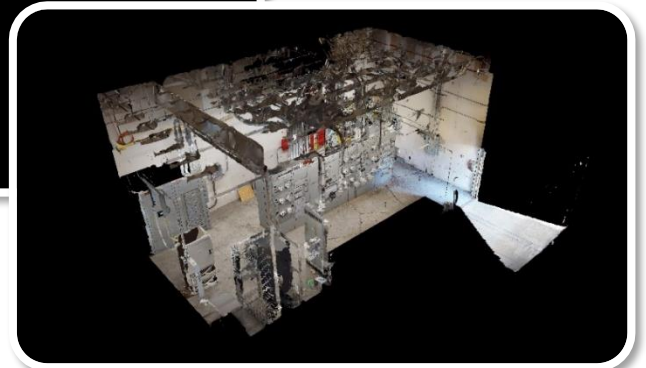
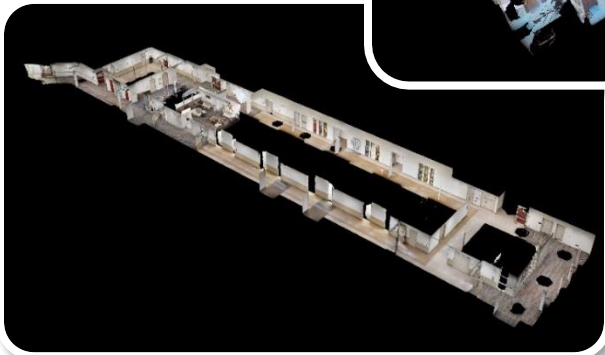
Our value proposition for UCI Medical Center was a 3D scan for legal liability purposes. The air handler located on the roof was going to be replaced with a more efficient unit. The weight of them was around 1.5 tons each. Having a 3D scan memorializes the current condition of the environment, if anything damage is incurred during in the process of changing the existing units, the scan will identify it.





Dollhouse View

The Dollhouse view is exactly how it sounds; it shows the entire property as if it were a dollhouse on your living room floor, offering a look into the full structure. You will have a deeper understanding of how the rooms and floors fit together by dragging the dollhouse to view it from different angles and zooming in and out.





Management Solutions

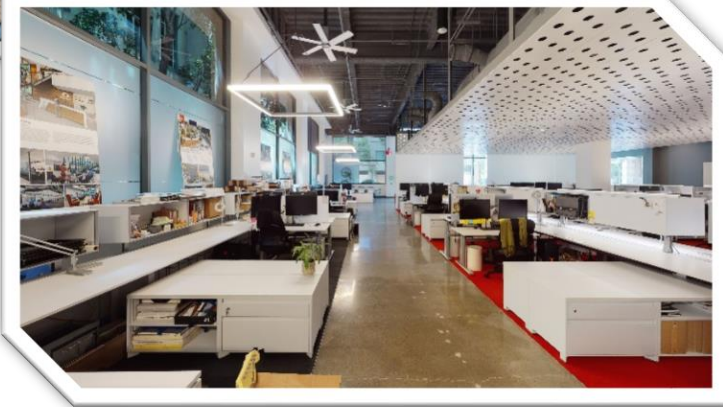
Our scope of work included the installation of three access doors for Management Solutions, located in Long Beach, California. SSP technicians ran the wire, mounted all hardware, and drilled the door. In the end, we wired the panel, installed electrified handles, and programmed the doors.

TSD Management

TDS Management needed to upgrade their security system with five dome cameras and five bullet cameras to maximize the safety of their residents. Our team of specialized technicians had to use a boom lift to be able to install cameras in hard-to-reach areas from a downhill road.

LPA Design Studios

LPA took advantage of our “one stop” shop and installed their glass door access with SSP. Our team mounted the reader, dropped the wire down the wall to the access reader and wired the door hardware. Moreover, LPA is currently using our security system at the following locations: San Diego, San Jose, Sacramento, San Antonio, Dallas, and Irvine.



Winsome House

Security Systems Plus installed a new Honeywell Vista 128 BPT Security Panel, along with five expanders and seven keypads. Our specialized technicians tested all ten magnet doors, fifteen motion devices, one glass devise and seventeen roll up doors to make sure the system is working properly, and the customer expectations are met.

Todd Pipe

Todd Pipe is a loyal SSP customer having our Honeywell Intrusion System installed at all their Southern California location in San Diego, Sylmar, West Los Angeles, Riverside, Hawthorne, Buellton, and Anaheim. Moreover, all their locations are monitored via Hikvision cameras installed by our experienced technicians.

Fjord Ventures

Fjord Ventures have been a loyal SSP customer for many years, and they decided to expand the Security System to three more suites and interconnect them. SSP professional technicians ran cabling from the IDF to head-end, program, name zones and test burglary alarm system. They installed expansion module and wired to the main burglary panel.



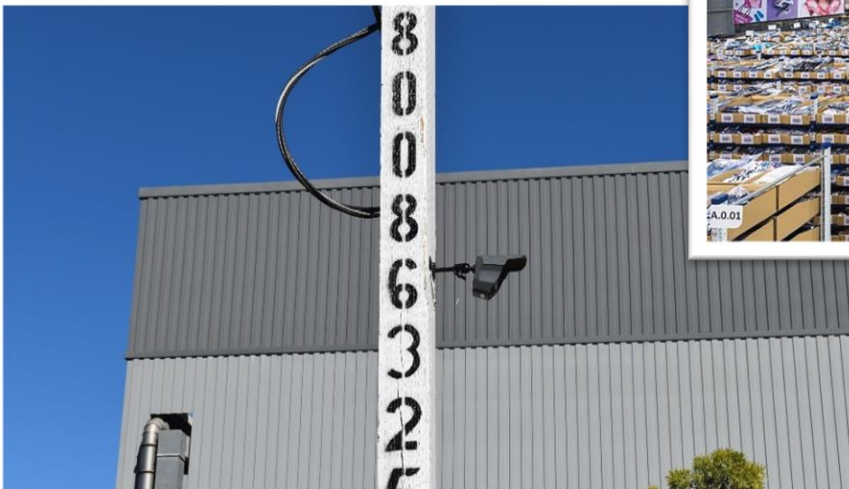


3PL Global

3PL Global, a 3rd party logistics company, with 700,000 square feet of modern, state-of-the-art facilities entrusted SSP to install Alarm.com Security Panel along with Alarm.com Access Control at two of their locations in Orange County, California. This project imposed a few challenges due to the size of the building and the fact that our technicians had to trace wire, test, and repair the bad one. However, the project was completed in time offering a secure space for the customer.

Robinson Reese

Robinson Reese is a full-service residential building firm dedicated to enhancing the lifestyle of their clients. Located in Newport Beach, California, they specialize in custom homes, both new construction, and renovation. SSP Installed 100% wireless Motion Viewer Battery-Powered PIR with Integrated Video Camera and linked them to a wireless Cellular LTE Alarm control all around their Job site in Newport beach that is being monitored 24/7.





ProGroup

SSP supported the door access and security camera installation at the new ProGroup Headquarters in Irvine, CA. Six exterior doors received door access controls from Alarm.com with monthly monitoring along with Hikvision Security Cameras. Seven (7) interior cameras and (8) exterior cameras were also installed. Cindy Kennedy, President of ProGroup, was very satisfied with the installation and quarterly system maintenance service.

SABP

Santa Ana Blueprint is a 75 year old Orange County printing establishment. SSP was engaged to provide door access and interior and exterior security camera systems. The alarm system used was Alarm.com and the cameras were supplied by Hikvision. SSP supplies online security video surveillance and quarterly maintenance and service. With years of local vendor contracts to choose from, SABP chose to use SSP to solve their ongoing security issues.





SABP Print Solutions

Originally known as Santa Ana Blue Print, was established in 1946 in downtown Santa Ana, California. SABP is the oldest and one of the few remaining privately owned and operated WBE & DBE Certified Reprographics Companies in Orange County offering the following services:

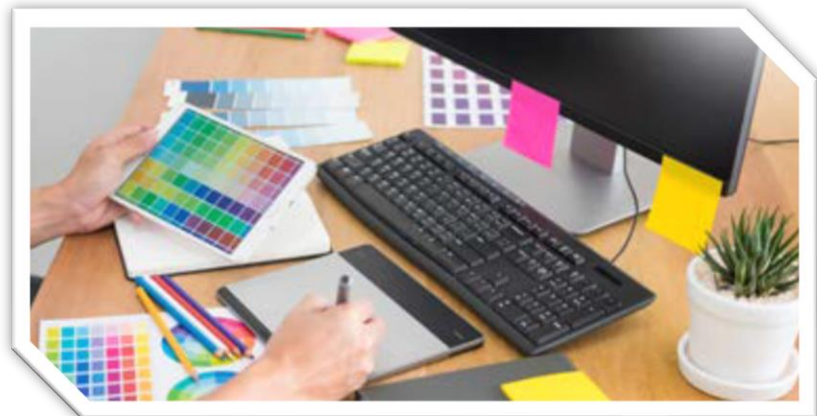
- **Reprographics**

- **Print Solutions**

Data management, mailing and fulfillment services, custom binding for books and presentations, short runs with Litho quality and long run variable data printing.

- **Finishing**

We will package your documents as you request, we offer special packaging for delivery or shipping options.



- **Litigation Support**

The Litigation Support Division was established in 2009 and has gained the trust and confidence of many top law firms in Orange County to effectively supply all of their Reprographic, Legal Copying, Scanning and E-Discovery need.

- **Scanning & Archiving**

SABP's scanning services can capture all your paper and digital documents, transforming them into instantly accessible information you can access from your own system or a cloud-based document management application

- **Direct Mail & Distribution**

SABP guides you through each step from conception to delivery with mailing services, data processing, list maintenance, merge/purge and others.



Irvine Ranch Water District

SABP began working with IRWD supplying officially recorded records maps. After attending a business outreach event we began managing their bid sets. We built our relationship with all departments. Now IRWD is our #2 top client.

Danny Chang and Associates, Inc. Statement of Qualifications

California State Licensed Contractor C-20 (Heating, Ventilation and Air Conditioning) and C-7 (Low Voltage Electrical & Control system)

Specialized in Building Environmental Control and Alarm System (BECAS) for AT&T central offices.

- Provide infrastructure monitoring.
- Provide infrastructure Control.
- Provide infrastructure Definition.
- Provide Centralized Control & Monitoring.
- Provide Maintenance and Technical Supports.

BECAS Infrastructure support services

- Chiller systems
- AHU systems
- Temperature, Humidity and Environmental control and monitoring
- DC power plants
- AC power monitoring
- Fire & Security monitoring

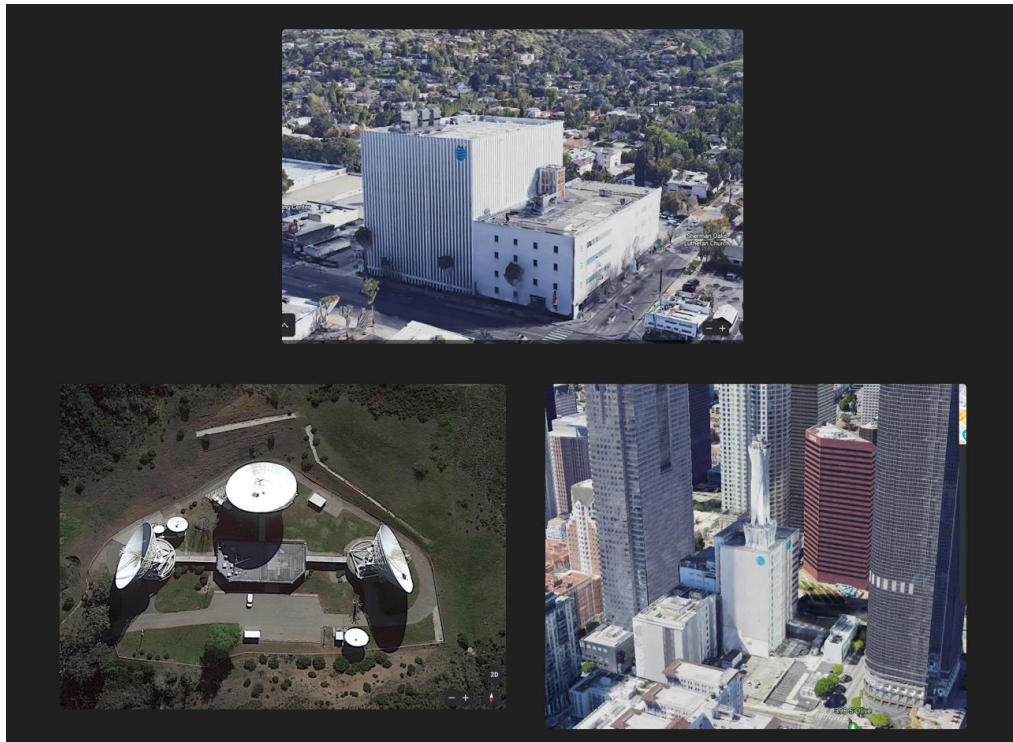
Advantage of BECAS system

- No single point of Failure
- Alarms on disconnect.
- Eliminates Home Runs
- DC Power
- Flexible networking
- Multi-vendor support
- Allow Floor to Floor information.

- Allow Virtual OSWF (On Site Work Force)
- Allow for support from SME (Subject Matter Expert) or OSWF from different regions.
- Maintains security levels.

BECAS User friendly Interface

- Uniform “look and feel” Graphical User Interface (GUI)
- Remote Monitoring and Control
- Data Access Support
- Predictive Maintenance
- Capacity Planning
- Financial Analysis (e.g., Plant retirement)
- Inventory Automation
- Life Cycle Maintenance and Replacement Schedule



Our Team

Tom Kennedy

Principal



With 40 years of business experience in a wide variety of industries, Tom is the Chief Executive Officer of Embee Companies. A strong core company values advocate, he firmly believes that great things are done by great people that are incentivized and motivated to exceed all expectations.

Angelia Dimattia

CFO



Angelia Dimattia, Chief Financial officer, is responsible for all of the company's financial functions, including accounting, audit, forecasting planning & analysis. Her financial management expertise combined with a strong business acumen allows her to view a business with a wide lens, identify successful business drivers, understand complex issues, take action and drive results. Her career spans more than 30 years of varied experience in financial management, business leadership, and corporate strategy.

Majid Daraee

Senior Estimator



Majid is a Senior Estimator with over 35 years of experience. His expertise includes electrical contracting in the residential and commercial space, solar panel systems, colleges, and community centers. Majid holds a Bachelor of Science in Electrical Engineering from Iran University of Science and Technology, as well as a Certification of Telecommunication from University of Berkley, California.

Negin Farahani
Executive Assistant



Negin brings 10 years of experience in business support to our team. Negin's well-rounded experience represents strong analytical skills, staff and office management, event coordination, informational counseling, and sales. She learns quickly and approaches tasks with creativity and ingenuity. she believes that each task is deserving of attention to detail.

Shahriar Sadeghi
Systems Manager



Shahriar is a Textile Engineer with 20+ years of experience in leadership. He is responsible for reviewing all aspects of Security System Plus Projects from technical reviews to field planning and execution. He has completed projects in both Commercial and Industrial sectors of the business in many States. He will assure that your project will be completed with the highest quality, On Time and On Budget.

John Liu
Business Development



John oversees business development for Embee Companies. His responsibilities include new business acquisitions and expansion of current customer relationships by focusing on understanding each client's unique needs to delivering a strategic customer centric approach. Bringing over 30+ years of experience, John graduated from CSULB with a Bachelor of Science in Economics.

Danny Chang
Project Manager



Danny has more than 25 years of experience in construction industries. Before joining Embee Power, Danny owns and operates his own business for 20 years specializing in direct digital control (DDC) systems for building environmental and control systems. Danny is a licensed Low Voltage Electrical Contractor (C-7) and a licensed Heating, Ventilation and Air Conditioning Mechanical Contractor (C-20). Danny graduated from University of California with a Bachelor of Science in Mechanical Engineering.

Leigh Griffith
Account Manager



Leigh is an account manager at embee Technologies and assists in the Estimating Department. She has over 15 years office experience and her top priority is providing not only exceptional support to the team but to our clients as well. Leigh has studied ASL and music.

Tina Aminian
Project Coordinator



Highly motivated individual with architectural background and 2 years of experience in Banking and customer service in diverse industries, focusing on fulfilling internal and external clients' needs and resolving issues while delivering high-quality performance. A team- player in a challenging environment, multi-tasking in a professional manner, adjusting quickly to changing priorities and deadlines.

Gerardo Hernandez

Field Supervisor



With over 22 Years of Foreman experience on Commercial Electrical Projects, including Retail, Office Space, Casinos, Hotels and Medical Buildings, always thriving to meet the deadlines on a proficient manner, focused on the prompt effective and efficient execution of all projects no matter how big or how small, with a keen eye for details, with "G" you are always in good hands.

Joel Parra

Assistant Project
Manager



Joel is an Experienced and Knowledgeable Electrician with more than 18 years of experience in Commercial and Residential work, focused on quality, safety, and customer satisfaction. Adept in performing electrical installations, maintenance, and repairs. Substantial knowledge of HCIA projects, industrial controls & NEC. Has several certifications including his 10hr OSHA for construction & General industry, Electrical construction, powder actuated (C2719), Aerial lift (1926.453) LOTO Certified (OSHA 29 133334)

Diego Arias

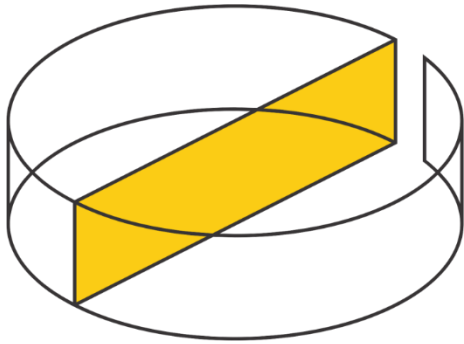
Electrical Foreman



Diego has over 10 YEARS of field experience in electrical construction. He has worked in all phases of construction from laying conduit in the ground to installing finished products. With his knowledge of various electrical systems and a Can-do attitude he is sure to find a solution to any obstacle he may run into.



T: 949 266 1700



embee companies™

Rovazzini Electrical Sherpas INC – www.rovazzinielectric.com

embee Technologies – www.embeetech.com

embee Power – www.embeepower.com

Danny Chang and Associates

embee 3D – www.embee3D.com

SSP – www.securitysysplus.com

SABP – www.sabp.com

- **Headquarters**
17622 Armstrong Ave
Irvine, CA 92614
- **San Diego Office**
951 S. 16th Street
San Diego, CA 92113
- **San Jose Office**
475 W. San Carlos, Ste 1101
San Jose, CA 99511
- **Sacramento Office**
501 S. Street, Ste 3
Sacramento, CA 95811